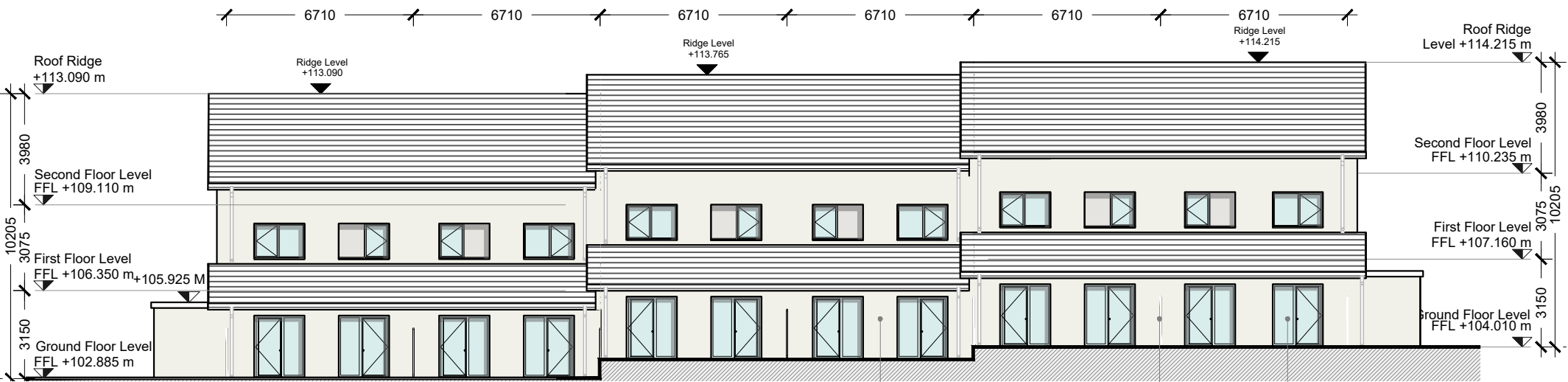




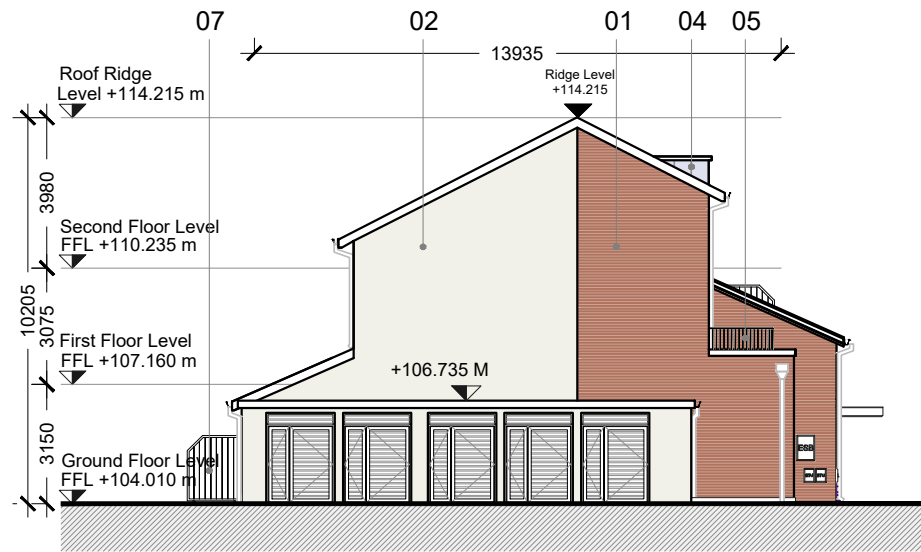
Duplex Type H1_Front elevation

Scale 1:200 @ A3



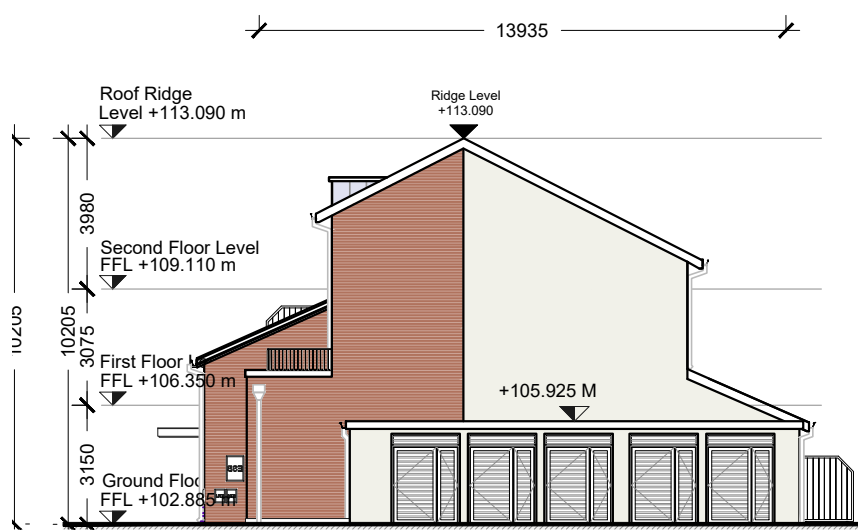
Duplex Type H1_Rear elevation

Scale 1:200 @ A3



Duplex Type H1_Side elevation

Scale 1:200 @ A3



Duplex Type H1_Side elevation

Scale 1:200 @ A3

Material legend

- 1. Selected brick finish
- 2. Selected render finish
- 3. Spandrel cladding to selected colour
- 4. Selected zinc roof
- 5. Steel handrail
- 6. Double glazed windows/ doors/ screens to selected colour
- 7. Louvred privacy screen

GENERAL NOTES

1. COPYRIGHT RESERVED

2. DO NOT SCALE DRAWING. USE FIGURED DIMENSIONS ONLY.

3. ALL DISCREPANCIES TO BE REPORTED TO ARCHITECT.

4. THE CONTRACTOR IS RESPONSIBLE FOR CHECKING ALL LEVELS AND DIMENSIONS.

5. ALL STRUCTURE TO BE TO STRUCTURAL ENGINEERS DETAILS.

6. ALL MECH & ELEC SERVICES TO SERVICES ENGINEERS DETAILS.

7. ALL PROPRIETARY ITEMS TO BE INSTALLED IN ACCORDANCE WITH MANUFACTURERS INSTRUCTIONS.

8. CONTRACTOR IS RESPONSIBLE FOR THE COORDINATION OF STRUCTURE FINISHES AND SERVICES.

REV	DATE	DESCRIPTION	BY

Type H1 (Duplex)

H1-GF Unit (2 bed)

Upper Ground Floor	77.4 sqm
Total	77.4 sqm

H2-Upper Unit (2 bed)

First Floor	51.4 sqm
Second Floor	44.0 sqm
Total	95.4 sqm



JOHN FLEMING
ARCHITECTS
The Tree House
17 Richview Office Park, DUBLIN 14.
T: (01) 6689888 E: info@jfa.ie W: www.jfa.ie

CLIENT
Ardstone Homes Ltd.

PROJECT
White Pines East SHD

Stocking Ave

DRAWING
Duplex Unit H1
Elevations

SCALE
1:200@A3

JOB NO.
1941

DRAWN BY
EH

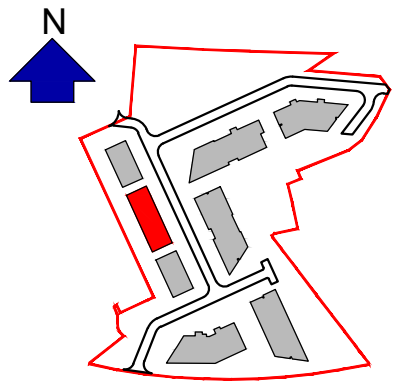
DATE
March 2021

DRAWING NUMBER
WPE-JFA-00-H1-DR-A-P4006

REVISION
-

DRAWING LOCATION
w:\19 jobs\1941\03-planning\3.1 planning applications\3.1.2 wpe\duplex

DRAWING STATUS
Planning



Keyplan

key plan

Scale 1:5000

